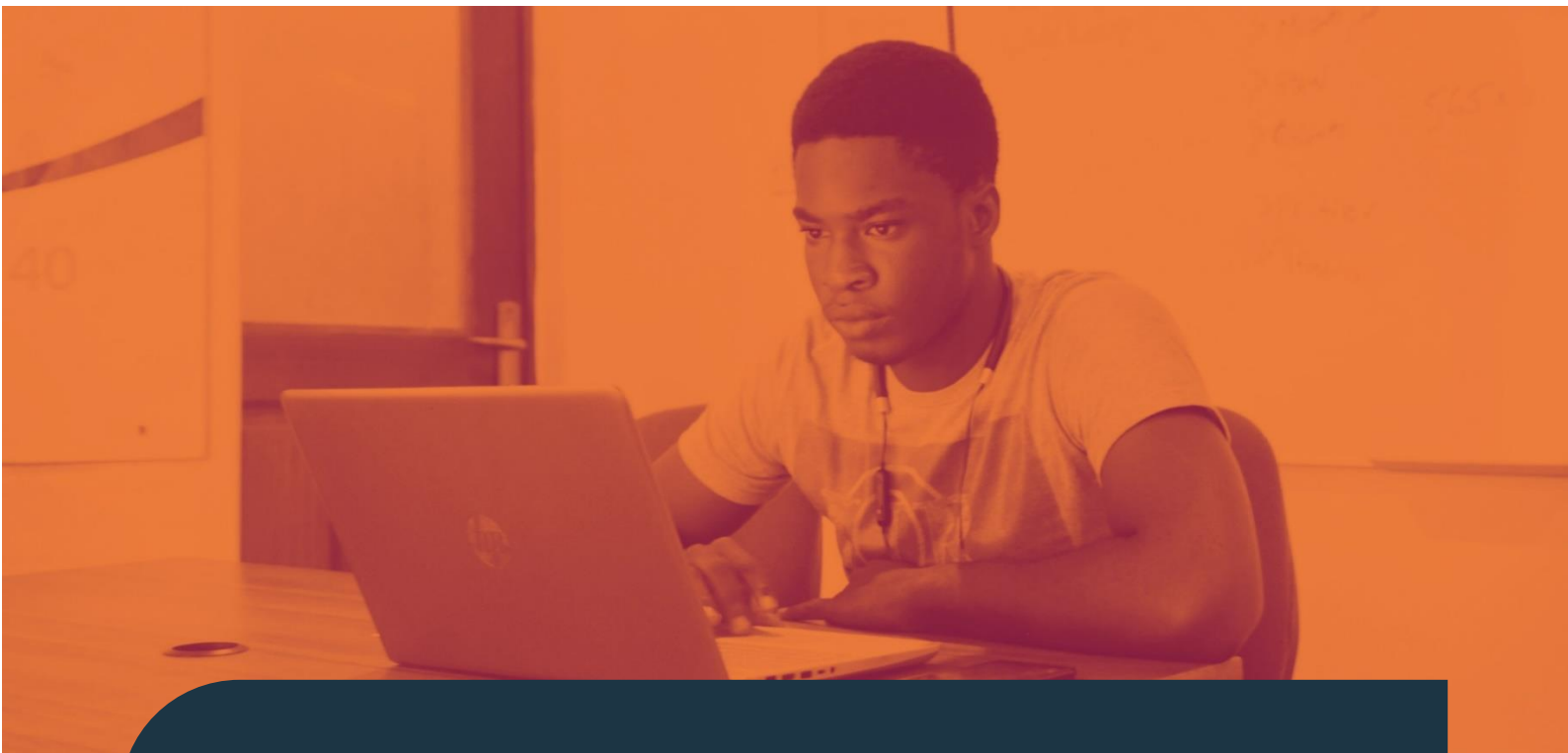




Qualification Guidance



## BIIAB Level 1 Award in Customer Service

Level 1 Award – 601/6789/0



## Qualification Guidance

### About Us

BIIAB Qualification Limited is part of Skills and Education Group, a charitable organisation that champions education and skills-oriented organisations, providers and learners, making real change locally, nationally and internationally.

BIIAB Qualifications Limited has an on-line registration system to help customers register learners on its qualifications, units and exams. In addition it provides features to view exam results, invoices, mark sheets and other information about learners already registered.

### Sources of Additional Information

The BIIAB Qualifications Limited website [www.biiab.co.uk](http://www.biiab.co.uk) provides access to a wide variety of information.

### Copyright

All rights reserved. No part of this publication may be reproduced, stored in a retrieval system, or transmitted in any form or by any means, electronic, mechanical, photocopying, recording or otherwise, without the prior permission of the publishers.

This document may be copied by approved centres for the purpose of assessing learners. It may also be copied by learners for their own use.

Version	Date	Details of Change
2.0	July 2017	RoC and Structure - Assessment methodology for units CS43, CS45 and CS46
3.0	January 2018	Updated handbook throughout to remove reference to QCF  Updated RoC with TQT figures
3.1	July 2023	Reformatted Qualification Guide into new branding
3.2	May 2025	Qualification Review Date extended for two years – no change to the content of the qualification.

## Contents

About Us.....	1
Contents.....	2
Qualification Summary .....	3
About the BIIAB Level 1 Award in Customer Service .....	4
Objective and Purpose of this Qualification .....	4
About this Guidance.....	4
BIIAB Qualifications Limited Customer Service .....	5
What are Rules of Combination (ROC)? .....	5
BIIAB Level 1 Award in Customer Service Rules of Combination (ROC) and Structure .....	6
Age Restriction .....	7
Entry Requirements and Progression .....	7
Assessment.....	8
Initial Assessment and Induction .....	13
Resources .....	13
Design and Delivery.....	14
Format of Units.....	14
Initial Registration .....	16
Qualification Review and Feedback.....	17
Mandatory Units.....	17

This is a live document and as such will be updated when required. It is the responsibility of the approved centre to ensure the most up-to-date version of the Qualification Specification is in use. Any amendments will be published on our website and centres are encouraged to check this site regularly.

## Qualification Summary

BIIAB Level 1 Award in Customer Service – 601/6789/0								
<b>Qualification Purpose</b>	To prepare for further learning or training by developing knowledge and/or skills in a subject area.							
<b>Age Range</b>	<b>Pre 16</b>	✓	<b>16-18</b>	✓	<b>18+</b>		<b>19+</b>	✓
<b>Regulation</b>	The above qualification is regulated by Ofqual							
<b>Assessment</b>	<ul style="list-style-type: none"> <li>• Portfolio of Evidence</li> <li>• Practical Demonstration/Assignment</li> </ul>							
<b>Type of Funding Available</b>	See FaLa (Find a Learning Aim)							
<b>Qualification/Unit Fee</b>	See BIIAB Qualifications Limited web site for current fees and charges							
<b>Grading</b>	Pass/Fail To achieve a Pass grade, learners <b>must</b> achieve all the Learning Outcomes and Assessment Criteria in all the units completed							
<b>Operational Start Date</b>	01/10/2015							
<b>Review Date</b>	30/09/2027							
<b>Operational End Date</b>								
<b>Certification End Date</b>								
<b>Guided Learning (GL)</b>	50 hours							
<b>Total Qualification Time (TQT)</b>	70 hours							
<b>Credit Value</b>	7							
<b>BIIAB Qualifications Limited Sector</b>	Business Support							
<b>Ofqual SSA Sector</b>	15.2 Administration							
<b>Support from Trade Associations</b>								
<b>Administering Office</b>	See BIIAB Qualifications Limited web site							



## Qualification Guidance

### About the BIIAB Level 1 Award in Customer Service

BIIAB Qualifications Limited is regulated to deliver this qualification by Ofqual in England. The qualification has a unique Qualification Number (QN) which is shown below. Each unit within the qualification will also have a regulatory Unit Reference Number (URN).

The QN code will be displayed on the final certificate for the qualification.

Qualification Title	Qualification Number (QN)
BIIAB Level 1 Award in Customer Service	601/6789/0

### Objective and Purpose of this Qualification

This qualification has been designed for learners who wish to develop skills and knowledge in Customer Service at level 1.

The primary purpose of the qualification is to prepare for further learning. However, employers can also rely on the knowledge provided as meeting nationally recognised standards for Customer Service at this level and as such the sub-purpose is to develop knowledge and/or skills in this subject area.

Due to constant regulatory, policy and funding changes users are advised to check this qualification has been placed in the relevant Apprenticeship Framework and / or is funded for use with individual learners before making registrations. If you are unsure about the qualification's status please contact BIIAB head office.

### About this Guidance

This guidance has been developed to provide guidance for learners, assessors and quality assurers undertaking, delivering, or quality assuring this qualification.

The purpose of the guidance is to provide the majority of the key information that may be needed to prepare for, and help support, the successful delivery of the qualification, in one place.

If this guidance is updated, centres will be notified by BIIAB Qualifications Limited.

## **BIIAB Qualifications Limited Customer Service**

BIIAB Qualifications Limited is committed to giving the highest possible levels of customer service. Our Service Level Agreement is available via [www.biiab.co.uk](http://www.biiab.co.uk)

Our Customer Service team can be contacted between the hours of 0900 and 1700 Monday to Friday by using the contact details below, or outside those hours, by leaving a message on our voicemail service.

Customer Support Contact Details: 0115 854 1620

Email: [CustomerSupport@biiab.co.uk](mailto:CustomerSupport@biiab.co.uk)

Our Customer Support team will be happy to assist with any administration related enquiries you may have. For example:

- registration and certification enquiries
- re-certification issues
- centres available in the local area
- appeals
- whistleblowing

## **What are Rules of Combination (ROC)?**

Under the Regulatory Qualifications Framework (RQF), qualifications can be made up of a combination of mandatory and/or optional units. The units and credits required to complete a qualification are set out by the rules of combination (RoC). The RoC allows for flexibility and transferability.

The ROC will specify:

- the total credit value of the qualification
- the amount of credit that must be achieved within specific groups of units (e.g. Mandatory, Optional Unit, and Optional groups)
- the minimum credit which must be achieved at the level or above the level of the qualification
- the Total Qualification Time (TQT)
- the title, Unit Regulation Number and BIIAB Qualifications Limited Unit number for each unit, alongside its level, credit, and Guided Learning Hours (GLH)
- any barred units (units that cannot be taken together as part of the qualification)

When choosing the appropriate route for a learner or group of learners, it is the responsibility of the centre to ensure the rules of combination are adhered to.

## Qualification Guidance

### BIIAB Level 1 Award in Customer Service Rules of Combination (ROC) and Structure

To achieve the BIIAB Level 1 Award in Customer Service learners **must** gain a **total of 7** credits. This **must** consist of:

- **Minimum total** credit: **7**
- Mandatory Group A **minimum** credit: **3**
- Optional Unit Group B **minimum** credit: **4**
- A **minimum of 4** credits **must** be achieved through the completion of units at **Level 1** and above
- Guided Learning hours (GLH): **50** hours
- Total Qualification Time (TQT): **70** hours

The qualification has been developed to provide skills and knowledge for learners to progress at this level.

Listed below are the qualification units.

#### Mandatory Group A

Unit No.	URN	Unit Title	Level	Credit	GLH	Assessment Method
CS1	L/506/2083	Understand working in a customer service environment	1	3	25	Assessment Knowledge Module (AKM)

#### Optional Unit Group B

Unit No.	URN	Unit Title	Level	Credit	GLH	Assessment Method
CS2	Y/506/2085	Communication in customer service	1	2	14	Portfolio
CS4	A/506/2113	Deal with customer queries, requests and problems	1	3	11	Portfolio
CS43	F/601/6079	Contribute to effective customer service	1	2	20	Assessment Activity Module (AAM)

## Qualification Guidance

Unit No.	URN	Unit Title	Level	Credit	GLH	Assessment Method
BA39	L/506/1905	Employee rights and responsibilities	2	2	16	Assessment Knowledge Module (AKM)
CS44	A/601/6047	The importance of appearance and behaviour in customer service	Entry 3	2	15	Assessment Knowledge Module (AKM)
CS45	R/601/6054	Understand how to deal with queries and requests	Entry 3	3	20	Portfolio
CS46	R/601/6071	Apply legislation, regulation and organisational procedures for customer service	1	3	24	Portfolio

### Barred Unit

This Unit	Is barred against this Unit
CS4 Deal with customer queries, requests and problems (A/506/2113)	CS45 Understand how to deal with queries and requests (R/601/6054)

## Age Restriction

This qualification is appropriate for use in the following age ranges:

- Pre 16
- 16-18
- 19+

## Entry Requirements and Progression

There are no entry requirements for this qualification. However, learners must be assessed to ensure they have a reasonable chance of achievement and will be able to generate the required evidence.

The qualification is designed to equip learners with the skills and knowledge to work effectively within Customer Service at this level. It also will allow for a number of progression routes to employment and into other areas of learning. The recommended progression route is to the BIIAB Level 2 Diploma in



## Qualification Guidance

Customer Service which focuses on the skills required to work in Customer Service roles at level 2.

Achievement of the qualification offers opportunities for progression, including:

- 601/3734/4 BIIAB Level 2 Diploma in Customer Service

## Assessment

### Overview of assessment strategy

The qualification contains two competence units and six knowledge units. The two competence units (CS2 and CS4) must be assessed in accordance with the Skills CFA Assessment Strategy. These two units can be assessed in the workplace or in a Realistic Working Environment (RWE). This is "an environment which replicates the key characteristics in which the skill to be assessed is normally employed". The RWE must provide conditions the same as the normal day-to-day working environment, with a similar range of demands, pressures and requirements for cost-effective working.

The knowledge units are assessed by Assessment Knowledge Modules (AKMs) externally set by BIIAB Qualifications Limited or Centre Devise Assessments. The AKMs are internally marked assessments, containing a series of questions, marked and internally verified by the centre and with external verification by the BIIAB Qualifications Limited External Quality Assurer (EQA).

Centres must obtain approval for any Centre Devise Assessments before their use. Please contact BIIAB Qualifications Limited for details of the Centre Devise Assessment process and procedure.

Unit CS43 combines knowledge and skills and as such is assessed by Assessment Activity Module (AAM). This is an internally marked assessment, containing a series of questions and tasks, marked and internally verified by the centre and with external verification by the BIIAB Qualifications Limited EQA.

Assessments provided by BIIAB Qualifications Limited will ensure that effective learning has taken place and that learners have the opportunity to:

- Meet the assessment criteria
- Achieve the learning outcomes.

Centres must obtain approval for any Centre Devise Assessments before their use. Please contact BIIAB Qualifications Limited for details of the Centre Devise Assessment process and procedure.

## Qualification Guidance

### Assessment Process

Assessment is the process used to judge the competence, of a learner, against set standards.

The assessor is the person who is responsible for determining learners' competence. The assessor may be a work place supervisor or an external person who is trained and qualified, or working towards a qualification relevant to the assessor role.

Assessors base their judgement on performance and decide how it compares to the national standard. The assessor will also ask questions based on the knowledge required to do the work, to ascertain the knowledge and understanding of the learner.

When the required units have been completed and the assessor is satisfied that the learner has met the national standard, a recommendation for a certificate will be made.

An Internal Quality Assurer (IQA) is responsible for the quality assurance of the qualifications within the training organisation and will provide advice, guidance and support to the assessors. IQAs also ensure that the assessors apply the standards consistently and fairly. The IQA will review the portfolio of evidence during the assessment process.

An External Quality Assurer (EQA), who is appointed by BIIAB, will quality assure the assessment and internal quality assurance decisions involved in the development of the portfolio. The EQA will quality assure the qualification process, which ensures that certification of the qualification is reliable, consistent and to the national standard, by checking the consistency of assessments made by the training provider, and across training providers.

### Requirements of Assessors, Expert Witnesses, Internal and External Quality Assurers

Candidates may be assessed, moderated or verified at work either by one or several appointed individuals.

**Assessors** - The primary responsibility of an assessor is to assess candidates' performance in a range of tasks and to ensure the evidence submitted by the candidate meets the requirements of the assessment criteria. It is important that an assessor can recognise occupational competence as specified by the national standard. Assessors therefore need to have a thorough understanding of assessment and quality assurance practices, as well as have in-depth technical understanding related to the qualifications for which they are assessing candidates. To be able to assess candidates, assessors must:

- hold an appropriate qualification, as specified by the appropriate regulatory authority, confirming their competence to assess candidates

## Qualification Guidance

undertaking competence-based units and qualifications. Assessors holding older qualifications must be able to demonstrate that they are assessing to the current standards;

OR

- be working toward an appropriate qualification, as specified by the appropriate regulatory authority. Any assessors working towards an appropriate qualification must ensure their decisions are countersigned by a suitably-qualified assessor/verifier and should be supported by a qualified assessor throughout their training period.
- be 'occupationally competent'. Assessors must provide current evidence of competence, knowledge and understanding in the areas to be assessed. This will normally be achieved through demonstrating competence in the roles which are to be assessed, or demonstrated by relevant experience and continuing professional development (CPD) which may include the achievement of qualifications relevant to the areas being assessed.
- have a full and current understanding of the units of competence and requirements of the qualifications being assessed, including the quality of assessment and the assessment process. It is the responsibility of approved centres to select and appoint assessors.

**Expert Witnesses** – Witnesses don't have to be "expert". They can be drawn from a wide range of people who can attest to the learner's performance in the workplace, such as line managers, experienced workplace colleagues, customers or clients. They need to:

- provide a written statement about the quality and authenticity of the learner's work
- have first-hand experience of the learner's performance and understanding.

As the assessment decision lies with the Assessor, it is their responsibility to verify this and, where challenged, to justify their acceptance of third party 'witness testimony' to the Internal Quality Assurer.

**Internal Quality Assurer (IQA)** - A primary responsibility of IQAs is to assure the quality and consistency of assessments by the assessors for whom they are responsible. IQAs therefore need to have a thorough understanding of quality assurance and assessment practices, as well as sufficient technical understanding related to the qualifications that they are internally verifying. It will be the responsibility of the approved centre to select and appoint IQA's.

**IQAs must:**

- hold an appropriate qualification, as specified by the appropriate regulatory authority, confirming their competence to internally verify

## Qualification Guidance

competence-based assessments and candidates. IQAs holding older qualifications must be able to demonstrate that they are verifying to the current standards

OR

- be working toward an appropriate qualification, as specified by the appropriate regulatory authority. If an IQA is working towards an appropriate qualification, his/her decisions must be countersigned by a suitably qualified IQA and should be supported by a qualified IQA throughout the training period.
- be 'occupationally competent'. IQAs must demonstrate sufficient and current understanding of the qualifications to be internally verified, and know how they are applied in business.
- demonstrate competent practice in internal verification of assessment, and demonstrate understanding of the principles and practices of internal verification of assessment, including the quality of assessment and the assessment process.

**External Quality Assurer (EQA)** - The primary responsibility of EQAs is to assure quality of internal verification and assessments across the centres for which they are responsible. EQAs must have a thorough understanding of quality assurance and assessment practices, as well as in-depth technical knowledge related to the qualifications that they are externally verifying.

EQAs **must**:

- hold an appropriate qualification as specified by the appropriate regulatory authority, confirming their competence to verify competence-based assessments. EQAs holding older qualifications must be able to demonstrate that they are verifying to the current standards;

OR

- be working toward an appropriate qualification, as specified by the appropriate regulatory authority. If EQAs are working towards an appropriate qualification, their decisions must be countersigned by a suitably qualified EQA and should be supported by a qualified EQA throughout their training period.
- be 'occupationally competent'. EQAs must demonstrate sufficient and current understanding of the qualifications to be verified, and know how they are applied in business.
- demonstrate competent practice in external verification of assessment, and demonstrate understanding of the principles and practices of external verification of assessment, including the quality of assessment and the

## Qualification Guidance

assessment process. It is the responsibility of the awarding organisation to select and appoint EQAs.

Awarding organisations require all assessors, moderators and verifiers to maintain current competence to deliver these functions. BIIAB recognises this can be achieved in many ways. However, such information **must** be formally recorded in individual CPD records that are maintained in assessment centres.

## Evidence from Workplace Performance

- Evidence of occupational competence of all competence units at any level, should be generated and collected through performance under workplace conditions. This includes the knowledge-based learning outcomes and assessment criteria of the competence units.
- These conditions would be those typical to the learner's normal place of work. The evidence collected under these conditions should also be as naturally occurring as possible. It is accepted that not all employees have identical workplace conditions and therefore there cannot be assessment conditions that are identical for all learners. However, assessors must ensure that, as far as possible, the conditions for assessment should be those under which the learner usually works.

## Knowledge Tests

Employers can use knowledge tests to assess an employee's knowledge and understanding of, for example, an organisational procedure.

Knowledge components set out in the standards can also be assessed by knowledge tests. In this case, assessors and internal verifiers must make sure that:

- the use of knowledge tests has been agreed with the external verifier in advance
- the knowledge being tested matches that specified in the NOS
- a robust assessment methodology comparable to awarding body practices is used

## Appeals

If learners are dissatisfied with an assessment outcome, they have the right to appeal. The main reasons for an appeal are likely to be:

- Learners do not understand why they are not yet regarded as competent, because of unsatisfactory feedback from the assessor
- Learners believe they are competent and that the assessor has misjudged them, or has failed to utilise some vital evidence

## Qualification Guidance

BIIAB Qualifications Limited expects most appeals from learners to be resolved within the centre. BIIAB Qualifications Limited will only consider a learner's appeal after the centre's internal appeals procedure has been fully exhausted.

For full details of the BIIAB Qualifications Limited's appeals procedure please refer to <https://biiab.co.uk/policies-and-procedures/>

## Initial Assessment and Induction

Prior to the start of any programme it is recommended that centres should make an initial assessment of each learner. This is to ensure that the learners are entered for an appropriate type and level of qualification.

The initial assessment should identify the specific training needs that the learner has, and the support and guidance that they may require when working towards their qualification.

The centre must also identify any units the learner has already completed, or credits they have accumulated, relevant to the qualification.

BIIAB Qualifications Limited suggests that centres provide an induction programme to ensure the learner fully understands the requirements of the qualification they will work towards, their responsibilities as a learner, and the responsibilities of the centre.

## Resources

BIIAB Qualifications Limited provides the following additional resources for this qualification:

- Assessment Knowledge Module (AKMs) for assessing specific units
- Assessor Guidance for assessing specific units
- A Learner Summative Reflection
- Access to the units

All of these resources are available on request.

## Access to the Units

Units form the qualification and the standard that **must** be achieved in order to be awarded each unit. This is covered within the learning outcomes, assessment criteria and the indicative content that form part of the delivery. BIIAB Qualifications Limited includes the mandatory units within this guidance

## Qualification Guidance

document.

## Learner Summative Reflection

In order to claim the unit(s) for the qualification, the learner will need to complete a learner summative reflection, to reflect on their qualification, what they have learnt and how they have been able to apply this within their work role

## Design and Delivery

Centres must refer to the units that form the qualification and the standard that must be achieved in order to be awarded each unit. This is covered within the learning outcomes and assessment criteria that forms part of the delivery.

Each unit within this qualification has been allocated a number of Guided Learning hours (GL).

This can include activities such as training/class room based sessions, tutorials, supervised study or supervised 'on-the-job' learning and face-to-face or other pre-arranged 1:1 teaching sessions (e.g. simultaneous electronic communication such as webcam contact or internet messaging). It could also include time spent undertaking assessments.

The qualification will be assigned Total Qualification Time (TQT), which, as well as GL, will include the estimated number of hours spent in preparation, study or any other supervised learning, study or assessment for an average learner. When planning how to deliver the qualification it is important to refer to this definition.

BIIAB Qualifications Limited will not prescribe how the qualification is delivered, but centres must ensure the delivery chosen meets their learners' needs.

## Format of Units

All units within this qualification will be presented in a standard format that is consistent with the format for all units of assessment. The format will give tutors and learners guidance as to the requirements of the unit for successful completion. Each unit within this guidance document will be in the format below:

### Unit Title

This will be shown as it appears on the Register of Regulated Qualifications (<http://register.ofqual.gov.uk>).

## Qualification Guidance

### Unit Number / Unit Reference Number (URN)

The Unit Reference Number is the unique code that the unit is given by the Regulator. This unit will be referenced on the final qualification certificate. The same unique code for the unit applies in whichever qualification the unit is included within. BIIAB Qualifications Limited also assign unique unit numbers which is consistent when the unit is used in multiple BIIAB qualifications.

### Level

This identifies the level of demand for the unit, but may be a different level to that of the overall qualification. The level of the units will be set according to National Occupational Standards and the level descriptors.

### Credit

When a whole unit is completed the learner will achieve credits specified by the number of hours' learning time it will take an average learner to complete the unit including the assessment.

### Guided Learning Hours (GLH)

The required number of hours that learning should take place under the immediate guidance or supervision of a lecturer, supervisor, tutor or other appropriate provider of education or training.

### Total Qualification Time (TQT)

Total Qualification Time (TQT) is defined by Ofqual as the number of notional hours which represents an estimate of the total amount of time that could reasonably be expected to be required in order for a Learner to achieve and demonstrate the achievement of the level of attainment necessary for the award of a qualification. TQT is comprised of the following two elements:

- The number of hours which an awarding organisation has assigned to a qualification for Guided Learning, and
- An estimate of the number of hours a Learner will reasonably be likely to spend in preparation, study or any other form of participation in education or training, including assessment, which takes place as directed by – but, unlike Guided Learning, not under the Immediate Guidance or Supervision



## Qualification Guidance

of – a lecturer, supervisor, tutor or other appropriate provider of education or training.

TQT is always assigned to the qualification however a similar calculation may on occasions also be assigned to a unit.

## Learning Outcomes and Assessment Criteria

Learning Outcomes are what the learner is expected to know, understand or be able to do upon successful completion of the unit.

Assessment Criteria are descriptions of the requirements that a learner is expected to meet in order to demonstrate that a learning outcome has been achieved.

## Initial Registration

### Registration and Certification

Learners should be registered and certificated via BIIAB Qualifications Limited's Customer Management System.

### Equal Opportunities and Diversity Policy

BIIAB Qualifications Limited has in place an equal opportunities policy, a copy can be found at <https://www.biiab.co.uk/policies-and-procedures/>

BIIAB Qualifications Limited is committed to ensure that:

- approved centres operate an equal opportunities policy
- approved centres communicate the policy to staff and learners
- approved centres have an effective complaints and appeals procedure of which both staff and learners are made aware
- approved centres are aware of their responsibilities in providing equality of opportunity, particularly with regard to provision for learners with particular assessment requirements

### Reasonable Adjustment Policy

Learners who require reasonable adjustments for their assessments must inform their assessor at the beginning of their course of their requirements. BIIAB Qualifications Limited has a reasonable adjustment policy in place, a copy of

## Qualification Guidance

which is provided to all approved centres and can be found at <https://www.biiab.co.uk/policies-and-procedures/>

## Qualification Review and Feedback

BIIAB Qualifications Limited is committed to the ongoing review of this qualification to ensure it remains fit for purpose.

This review approach involves the collation of evidence in the form of any information, comments and complaints received from users of this qualification in relation to its development, delivery and award.

BIIAB Qualifications Limited will give due regard to any credible evidence received which suggests that a change in approach to the development, delivery and award of this qualification is required in order to ensure that no adverse effects will result. This qualification will be periodically reviewed and revised to ensure the content remains relevant, assessment approach remains appropriate and that it remains valid and fit for purpose.

## Mandatory Units

The following units are mandatory for this qualification. The optional units are available in the Unit Pack on request.

## Understand working in a customer service environment

<b>Unit Reference</b>	L/506/2083
<b>BIIAB Reference</b>	CS 1
<b>Level</b>	1
<b>Credit Value</b>	3
<b>Guided Learning (GL)</b>	25
<b>Unit Summary</b>	The purpose of this unit is to provide the learner with the knowledge of working in a customer service environment.
<b>Learning Outcomes (1 to 4)</b> The learner will:	<b>Assessment Criteria (1.1 to 4.3)</b> The learner can:
1. Know the importance of customer service	1.1 State what is meant by "customer service"  1.2 State why effective customer service is important to an organisation
2. Know the factors affecting customer service	2.1 Outline the difference between an internal and an external customer  2.2 State how to identify customers' needs and expectations  2.3 List information sources needed to deliver reliable customer service  2.4 Describe the relationship between customer expectations and customer satisfaction
3. Know how to work in a customer service role	3.1 Identify personal behaviours that can positively affect customers' perceptions of an organisation and its products and/or services  3.2 Identify the job roles within a team delivering customer service  3.3 State the standards of personal presentation and behaviour expected by

	<p>customer service staff in different organisations</p> <p>3.4 State standards and practices that relate to a service offer within different types of organisation</p> <p>3.5 Describe how legislation and organisational requirements affect what can be promised or carried out in a customer service role</p> <p>3.6 Describe the procedures for protecting customers' personal information and safety</p> <p>3.7 State the importance of protecting customers' personal information and safety</p>
<p>4. Know how to refer customer queries and problems to others</p>	<p>4.1 Describe types of customer behaviour that show when a customer is dissatisfied</p> <p>4.2 State the procedures to be followed when dealing with customer queries or problems</p> <p>4.3 State to whom to refer customer queries and problems</p>